

# MICHELIN OMNIBIB

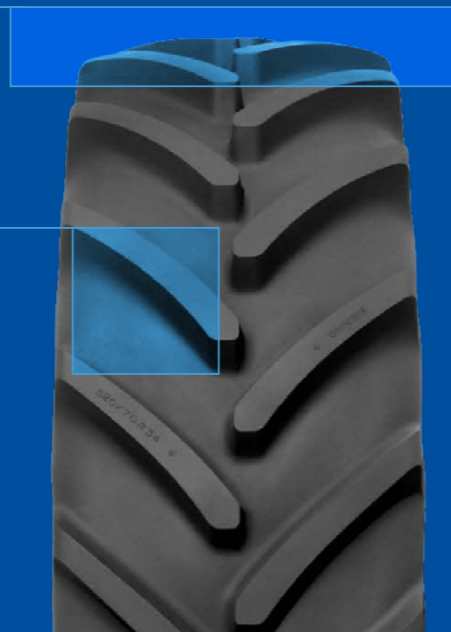


## WIDE & FLAT TREAD

*Greater stability*

## WIDE LUGS

*Long Service Life*



## BORROWING SURFACE

- Up to 16%\* of surface additional impression
- Optimized ground pressure

## FLEXIBLE, ROBUST CASING

**GREAT VERSATILITY  
TO OPTIMISE  
YOUR OPERATIONS**





## GREAT VERSATILITY TO OPTIMISE YOUR OPERATIONS

### AVAILABLE SIZES

Ø (inches)	Tyre size	CAI	specifications				Recommended rim Acceptable rim	Interne volume 75 % (liters)	Tread depth (mm)
			S (mm)	D (mm)	R' (mm)	CdR (mm)			
16	280/70 R 16 112D TL	747196	276	805	360	2400	W9 - W10L - W8 - W8L	65	29
20	280/70 R20 116D TL	263806	268	904	409	2690	W9 - W10 - W8	157	44
24	320/70 R24 116D TL	415039	323	1101	497	3274	W10 - W11 - W9	159	38
	360/70 R24 122D TL	198698	373	1153	513	3418	W11 - W10 - W12L	178	44
	380/70 R24 125D TL	085816	399	1188	528	3520	W12 - W11 - W13	218	46
	420/70 R24 130D TL	829095	436	1251	553	3702	W13 - DW14L - W12L - W14L	287	48
28	480/70 R24 138D TL	375821	494	1327	578	3916	DW15L DW14L - DW16L - W14L - W15L - W16L	177	44
	380/70 R28 127D TL	118587	390	1294	580	3842	W12 - W11   W13	198	43
	420/70 R28 133D TL	532215	436	1354	602	4012	W13 - DW14L - W12 - W14L	242	45
30	480/70 R28 140D TL	570026	500	1427	632	4217	DW15L DW14L - DW16L - W14L - W15L - W16L	318	48
	480/70 R30 141D TL	599351	498	1482	656	4388	DW15L DW14L - DW16L - W14L - W15L - W16L	333	48
34	480/70 R34 143D TL	280033	497	1593	713	4728	DW15L DW14L - DW16L - W14L - W15L - W16L	364	48
	520/70 R34 148D TL	939411	535	1651	730	4887	DW16L DW15L - DW18L - W15L - W16L - W18L	364	48
38	480/70 R38 145D TL	936570	498	1694	759	5030	DW15L DW14L - DW16L - W14L - W15L - W16L	463	54
	520/70 R38 150D TL	833744	539	1766	782	5229	DW16L DW15L - DW18L - W15L - W16L - W18L	394	48
	580/70 R38 155D TL	001240	601	1836	815	5440	DW18L - W18L	500	53
42	620/70 R42 160D TL	989457	639	1953	863	5781	DW20B (A)L - DW18L	602	56

For the load / pressure table, please refer to the MICHELIN AG technical documentation, downloadable from our website <https://agro.michelin.com/>.

### MICHELIN ADVICE

#### MACHINE #1

FRONT ..... PRESSURE ..... (bar/psi)

REAR ..... PRESSURE ..... (bar/psi)

#### MACHINE #2

FRONT ..... PRESSURE ..... (bar/psi)

REAR ..... PRESSURE ..... (bar/psi)

## MICHELIN OMNIBIB, SAVINGS IN TIME AND FUEL



# UP TO 14%

MORE LOAD THAN A STANDARD TYRE\*

#### • SAVINGS IN TIME AND FUEL

- Excellent self-cleaning capacity
- Better grip

#### • MORE LONGEVITY

#### • COMFORT ON THE ROAD AND IN THE FIELD

- Pressure generally 0.2 bar lower than the other 70 series tyres on the market
- Flexible casing
- Performance guaranteed up to 65 km/h. – D rating, where authorised by the country legislation

#### • HIGH LOAD CAPACITY FOR WORKING WITH FRONT LOADERS

- Up to 14%\* more load than a standard tyre
- Robust tread lugs

#### ■ PRODUCTIVITY



up to 65 km / h\*\*

#### ■ SOIL PROTECTION



Performing in fields  
and on the road

#### ■ COMFORT ON ROADS



Excellent performance

### MICHELIN OMNIBIB, STRONG TRACTION CAPACITY FOR SAVING TIME AND MONEY